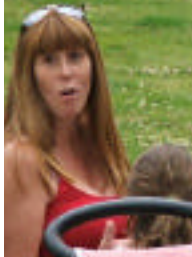
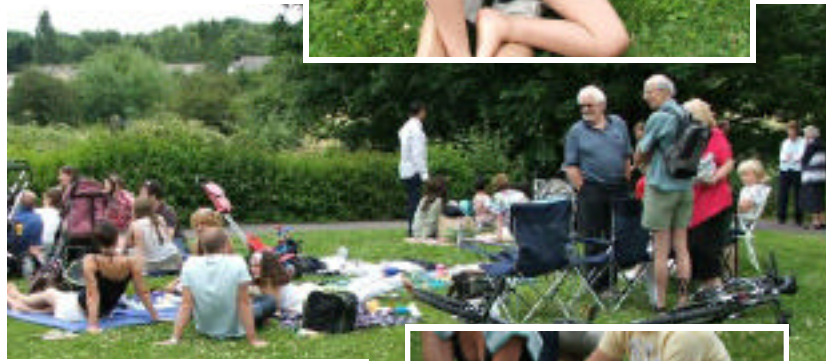


BYEWATERS RESIDENTS NEWSLETTER

SEPTEMBER 2008



Please send articles, advertising, photographs etc. for the December Newsletter to Fran, 78 Byewaters or email fran.koster1@gmail.com



Hi,

Well the summer (monsoon) is almost over, it certainly has been wet and taken a long time to get going, did you see it?. This is our third newsletter and we still need your articles for future editions. Our next edition will be December/Christmas, so festive contributions, recipes, present ideas, etc. It seems a long time ago now but our first Byewaters Picnic on the Green, Sunday, 13th July, was great. We were so lucky with the weather and had a good response. Everyone that came had a great time and want it to be a definite again for next year. Now the kids are back at school Mums can kick back a bit after the long school holidays. If

we have a late summer, they can even meet up on the green for a Mum's picnic. You will notice we have lost James as our sponsor and Parkheath have stepped in for this issue, but if anyone wants to sponsor us or has a sponsor in mind please let me know so that our newsletter can continue. Enjoy Autumn by the canal, see you in December.

Fran - Editor

Thanks go to:- Mike Weintraub (Page layout), The Imagehaus Ltd (Printing), Les Koster (Cover photos), Parkheath Estate Agents (Sponsorship).

Byewaters Roads Adoption Group BRAG

Current target date to complete adoption formalities is 31st December 2008. BRAG continue to monitor progress of the adoption process and it appears to be on-track. The next significant date will be the delivery of an updated progress report to the Hertfordshire Highways/Three Rivers joint member meeting on 22nd October 2008.

David - Byewaters



Croxley Common Moor, like many of Three Rivers' six Local Nature Reserves, is lucky enough to have a dedicated team of volunteers looking after it all year round. Local volunteer and Secretary of Friends of Croxley Common Moor, Graham Everett, is a regular at the Moor's voluntary work sessions. Graham said: "Soon after moving to Croxley Green five years ago I saw a poster advertising scrub clearance on Croxley

Common Moor. I found the atmosphere at the work session very friendly and quickly became a regular. I would recommend the work sessions to anyone who likes working in the open air and cares about nature conservation. Removing ragwort on a sunny day, surrounded by wild flowers, is idyllic!" Everybody is welcome to come along: you don't need to be superfit to help!

For more information: 01923 776611 www.threerivers.gov.uk or www.cvs-threerivers.org.uk 01923 711174.



Byewater Babes - Calling all Mums

It was great to meet a few mums at the first Byewaters picnic, but I'm sure there are a lot more of you out there. I thought it would be nice to

get to know other mums from Byewaters and share experiences over tea (and maybe even biscuits!) If you are interested in meeting up, come along to 29 Byewaters (the left hand townhouse opposite the t-junction, as you come onto the estate) on Thursday, 25th September at 2pm and we can organise a regular meeting time. If you can't make that but would like to get together, pop in and see me or stick a note with your mobile number through the door and I'll get back to you. Hope to see you there.

Dawn - Byewaters

ADOPT A VERGE

The grass verges around the estate roads should be maintained by Barratts under current agreements. Unfortunately this isn't happening and so the roads look rather untidy. Some residents have kindly stepped in and are now trimming the verges near their homes. If you have a moment, please think about trimming the verge outside your home, before you put your mower or strimmer away for the winter.

David - Byewaters

Watford Palace – 100 Years

Watford Palace Theatre celebrates its centenary this September and is holding a number of special events including an open day on 14th September from 10 - 4 pm. Where people will have the chance to find out more about the theatre and its work. Guided tours, including a visit backstage, storytelling and drama workshops are some of the activities on offer. There is no need to pre-book, tickets for timed activities will be available on the day.



BYEWATERS FIRST PICNIC ON THE GREEN

As the date for the picnic approached and the 'British Monsoon' continued the picnic idea was not looking too good! Sunday, 13th July arrived and the weather looked promising and as the clock struck 2.00 it was still dry and there was even some 'sun'! We headed to the appointed spot with our picnic and chairs. As we stood on the pathway and looked back towards the houses we could see others heading our way, what a relief!! We ended up with about 50 people. Some came for a short time, others laid out their blankets and picnic and stayed for the whole afternoon. The weather turned a little more cloudy but it

was warm and more importantly dry!! Picnickers were getting to know each other and new friendships were formed. It was suggested that more events should be held, any ideas? A yearly picnic on the green certainly looks like a good idea. But any day can be a picnic on the green, just take yourselves along to the green with a chair or blanket and meet your neighbours, spend a very pleasant afternoon enjoying our splendid surroundings.

You don't have to spend money on expensive petrol travelling out into the countryside. If you didn't manage to come please try to next time, we'd love to see you there. Some photographs are on the front cover, as you can see a good time was had by all.

(If there is a picnic photograph you would like, let me have your email address so I can forward it to you.)

Fran

Rail link Plans Get Support

(Watford Observer 8/8/08)

With costs spiralling to more than £145 million, Hertfordshire County Council has revealed a support and funding plan while insisting that the long delayed Croxley Rail Link will still, eventually surface. The proposed link between the Metropolitan tube line and Watford Junction station has gained the support of the East of England Regional Planning Panel. Support which could help the project receive £119.5 million from the Department for Transport. Stuart Pile, the county council's executive member for transport, said the announcement was a "significant step forward". He added "This is good news for everyone in Watford. The proposed rail link will have a major impact on relieving congestion, as well as improving transport links between London and Watford town centre. We are committed to this scheme. I look forward to seeing it come to fruition". The council plans to contribute up to £26 million to the project, money which it hopes to get back through ticket sales and other London Underground revenue. The Mayor of Watford Dorothy Thornhill said "I'm delighted that the scheme has now got regional approval. We have been campaigning for the Croxley Rail Link for a number of years and it should help alleviate traffic congestion by taking 300,000 car journeys from the road network. Clearly the green light for the health campus project makes the rail link more viable. The link will open up the transport systems for residents living in Watford and the wider area". The council is still seeking the Department of Transport's permission to build the link.



TRADE LIST

It has been suggested that a 'Trade List' be included in the Newsletter.

Unfortunately, we only have four pages for articles, a front cover and a back cover for the sponsor's advertising. Maybe we could start a trade list on a separate sheet but the cost would have to come from

the traders. If you think this is a good idea and you have a trade to offer to Byewaters, you could start by submitting your details with what you do (or want to sell) and we could take it from there. We will see what sort of response we get.

Fran

An invitation to visit one of
Hertfordshire's oldest timber framed buildings

CROXLEY GREAT BARN c.1398 (Grade2*)

A 5-bay, aisled 'threshing' barn over
100ft x 40ft, with crownpost roof (Grade2*)

Great Barn Tour Dates 2008

27th SEPTEMBER

25th OCTOBER

(last Saturday in month)

Tours commence 11am and need perhaps an hour.

Join us at Caravan Lane, Rickmansworth High Street (east end)
at 10.30am.

Parking in public carpark only.

Bear in mind that the barn has a rough uneven surface and
that the footpath may be muddy: do choose appropriate footwear.

Groups Welcome

Enquiries to: 01923 772325

or e-mail: info@trmt.org.uk

Web : www.trmt.org.uk

Picnic/Play Area - Dog Fouling

The sign opposite was created by children at a local school.

Yes, it is that much talked about topic, but the Picnic/Play Area near the bungalow flats, we hope, will eventually have notices reminding people not to allow their dogs to foul. Obviously we do not want fouling anywhere on Byewaters but especially here, so that adults and children can use this space without 'little surprises'.



NEIGHBOURHOOD WATCH

We appear to be very lucky on Byewaters as the crime levels are extremely low. Unfortunately it does not mean that we should be lax with the security of our homes. It is well known that in the summer, when people have their windows wide open that chance burglars are on the look out for an easy entry but this is the same for any neighbourhood. It was reported in our June issue about thieves targeting BMW wheels. They have found a quiet and ingenious way of removing the wheels without setting off alarms, but again this is a local area problem (Rickmansworth/Watford) not just on Byewaters. During 2007 on Byewaters a car had a window smashed, thieves made off with an Ipod, briefcase and travel documents. We must all be careful, never leave anything on car seats that might look expensive or interesting, mobile phones etc. Also in 2007 thieves found a side door open and were able to enter a property making off with items from the house. Again it is unfortunately the times we live in, securing



back/side gates and doors would make life that much harder for burglars and in 2008 another garden shed and car were broken into.

June 2008 thieves managed to find the keypad entry number for the communal shed (Evensyde) which houses pedal cycles and after removing locks, stole a bike. Let us all make our property secure, keep alert and report anything suspicious but remember the crime rate on Byewaters is very small.

Always looking for more co-ordinators to help keep us all safe.

Brian - Heckford Close

Neighbourhood Watch. Tel: 07951 037130

email: brian.meehan@hertswill.co.uk

http://www.herts.police.uk/about/in_the_loop.htm

A website that might be of interest to you

Byewaters Estate Management Company News

Website. Visit www.byewaters.co.uk for up to date information, or to contact the directors. The website has pages on: company description, company news, contacting the company, roads adoption, planning applications affecting the estate, and requests for help.

Canal-side lights (at weir end). Following the exploratory work reported in the previous newsletter, the company's electrical contractor has recommended wiring works to make these lights work reliably. The directors have approved the contractor's quotation of £3900 plus VAT.

Estate-entrance trees. The directors have chosen as replacements the multi-stem type of birch with a striking bark found in Blackmoor Lane (outside the Woodmansterne office). Three of these will be planted this coming winter (the best time to plant trees). We are grateful to the resident who has offered to water them regularly during dry weather.

Other dead estate trees. Unfortunately our present insurance policy does not cover vandalism to trees. So far only one resident has offered to help plant new trees (thus reducing the cost). More offers would be welcome, to spread the burden.

Skills needed. The directors would welcome input from any resident with accountancy or legal skills, either as a director or as an adviser.

Roadside verges. Roadside verges remain the responsibility of Barratts until such time as the estate roads become adopted by the local highways authority. Barratts should finance their maintenance until then, but in practice has proved reluctant to do so. Peverel OM cannot legally carry out maintenance to these areas as they do not form part of the communal areas of the development. Until roads adoption therefore realistically those verges will only be cared for by public-spirited residents.

(Any offers of help please to directors@byewaters.co.uk)

Graham Everett

NOISY CANAL BOATS

For a few months during the spring and summer we had some long stay canal boats. At least one was causing a nuisance to Residents as it had its generator still going well into the night and early hours. Residents affected used the blog site to express their anger, as they were getting little sleep due to the noise. British Waterways were contacted several times and eventually served the barges with letters on 4th July. Thank goodness that weekend they went on their way they are now probably annoying other people along the canal! The Blog site helped to keep people informed and the phone calls and letters Residents sent to British Waterways made them (in their own time!) move the offending barges on. Let us keep helping each other when we can.



Fran

MULTI USE GAMES AREA – PLANNING

Most residents will know about the proposed football pitch with floodlighting etc. Lots of residents have campaigned hard against this going ahead. On 21st August the planning application was due to be debated at the Three Rivers Town Hall. The planning application was withdrawn at 5.00 pm that day by Greenhills. Everyone is delighted, even though so many local groups were against this including residents, and it was unlikely it would have been approved in its present form. It is now a waiting game, what new plans will Greenhills submit, watch this space. Thank you for writing letters and supporting the action group, they might need your help again soon!!

Nick - Gill Close

MORE ON WHERE WE LIVE

In 1835 pockets/covers or as we know them today envelopes were coming into fashion. John Dickinson conceived the plan that official stamped pockets/covers (envelopes) should be made of his 'Thread' paper. In 1838 Rowland Hill proposed there should be a 'Uniform Penny Post', the first were made with silk from John Dickinson's Silk Thread paper to avoid forgery. At times The Mill was employing some 3,500 staff.



John Dickinson's 'London District' essay for a 2d. letter sheet in green for the prepayment of post as submitted and recommended by the Commissioners of Post Office Inquiry in July 1837



John Dickinson's 'London District Post' essay for a prepaid 1d. letter sheet in yellow-buff as submitted and recommended by the Commissioners of Post Office Inquiry in July 1837 and having silk threads running through the paper for protection against forgery.

During World War II The Mill manufactured Fuse Caps, Map Paper and Anti Radar Paper for the war effort.

The remains of the railway track near Common Moor Lock 79 is where a Steam Train and Steam Crane were used for unloading the coal from barges to be transferred to the boiler house.

The Watford time office was approximately where 1 Byewaters is now and the Croxley time office was near where we had our Byewaters Picnic in July. The only road into The Mill was Beggar Bush Lane.

Alan - Evensyde

ON YA BIKE

Being a woman of ample proportions, fast approaching my 60th birthday. I was a little surprised whilst out shopping, we stopped at the local bike shop! Never in a million years did I expect to be in a bike shop or to actually see something that I would have wanted to buy! Just to put you in the picture, I don't do buses let alone bikes!

So here we were, with a very nice man showing me the most beautiful bike I had ever seen. A lovely shade of green, the sort of frame I could step over comfortably. As I am built rather more for comfort than speed, we decided that perhaps a bigger, extra padded seat might help. It had a nice little basket on the front and a pannier on the back (not quite sure what I'll use this bit for yet but we shall see). So we get the bike home and of course the first thing I want to do is to get on my bike and go for a ride. What you must remember is the fact that I have never ever been on a grown up bike before! The last time I rode a bike, it was pale blue, had three wheels and a little boot on the back, with a long stick that my mum could hang onto, so you can imagine the sight. I was hot, bothered, had a bright red face, sweating away, my knees were killing

me. I nearly fell in the canal twice, but oh boy did I have a nice time. I managed to get round the estate twice, stopping on the way to admire the ducks (mostly to get my breath back). I almost collided with a 4 x 4 but managed to stop without getting into too much trouble. So, if you see me pedalling furiously around our lovely estate, please wave or say hello. I can't guarantee that I will be able to respond, but I will try. You will recognise me easily, I am the lady of ample proportions, little red face, with hurtey knees but with the biggest smile ever, having a smashing time. (No pun intended.)

Val - Gill Close



WHIRLPOOL APPLIANCES



A large number of properties on Byewaters were fitted with Whirlpool appliances. In my kitchen there is a dishwasher, hob, oven, extractor, fridge freezer and washer dryer – all Whirlpool. Recently I replaced my washer dryer, which was 7 years old, with a new Whirlpool appliance. After two weeks it broke down, I had to wait while they obtained the part from Italy. 10 months later the same part had to be replaced again, four months after that the same part failed again. In August the machine broke down again guess what – it turned out to be – the same part!! My machine, which is only 17 months old has had four control modules/panels replaced, and now needs a fifth! The reason for this cautionary tale is to warn others of this problem when replacing Whirlpool appliances. Whirlpool's department with the title of 'customer services' 'customer care' is the worst I have ever come across!

At one point they were about to let me have a replacement machine but then changed their minds! They do not seem to have grasped the idea of a 'good will gesture', for loyal Whirlpool customers. I am now having to 'do battle' with their 'customer services/care' department 'ice maidens', who have no idea what 'care' or 'service' actually means!! Wow, I feel much better now I have shared this with you all, obviously this is just my story, the decision to buy Whirlpool or not is yours!!

Fran

MY HOLIDAY

One of Dad's Tours!

by Cally Steadman (aged 14)



We're off to Scotland, this holiday should be fun.
We'll sit on the beach sunbathing, just my brother, dad and mum.
I'm strapped in the seat of our Volvo, and keep glancing at the time.
Dad got pulled over for speeding, and now we've got a fine.
All I can see is hills, from this stuffy car.
Occasionally there's a tree, I hope camp isn't too far.
3pm and we're still driving, Rob has gone to sleep.
We're trailing up a lane, blimey, it is steep.
Dad took a sharp left, and turned into a lane.
The rain is hammering down, I don't want to come here again.
The car has broken down and now it's getting late.
Dad's mobile battery has gone, so we're climbing over a gate.
Mum is getting stressed, we're lost up on the moors.
Remember to remind me, Never to go on one of dad's tours!

(have you or one of your children got a holiday memory or poem?)

REMEMBER -

A wise man always remembers a woman's birthday but never her age!!!

Our Excellent Printer is:- The Imagehaus Ltd.,
Unit 1 (Woodmanstern Hse.) The Boulevard, Blackmoor Lane
WD18 8YW Tel: 01923 230035 - Alan

